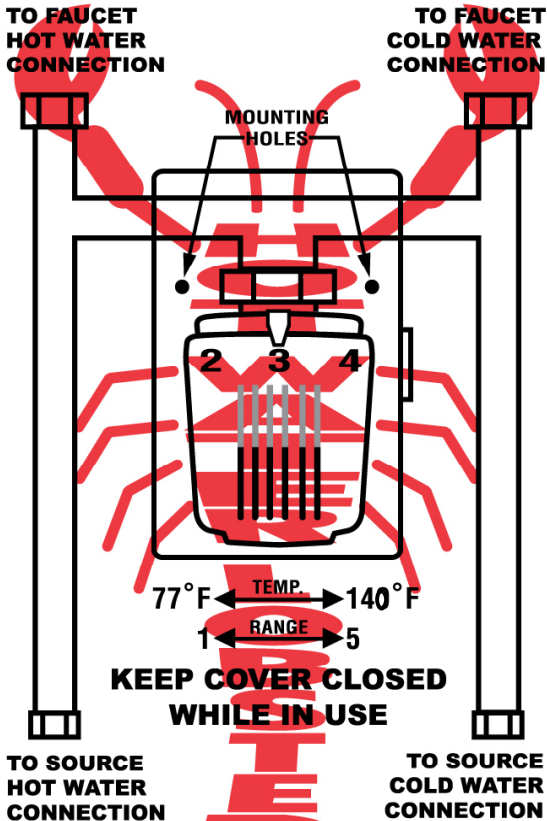


# HOT WATER LOBSTER MODEL: HWLD09 INSTALLATION INSTRUCTIONS

## Hot Water Lobster® Instant Hot Water Valve



*"Always in hot water"*

[www.hotwaterlobster.com](http://www.hotwaterlobster.com)

U.S. Patent: 7,000,631  
Canadian Patent: 2,607,818

# **ANALYZE THE VALUE OF YOUR NEW HOT WATER LOBSTER INSTANT HOT WATER VALVE**

---

## **PRE-HOT WATER DELIVERY EVALUATION**

**To be completed prior to installation of the Hot Water Lobster Instant Hot Water Valve.**

Make sure the hot water has not been used for at least 4-hours at the faucet (in the location you will be installing the Hot Water Lobster Instant Hot Water Valve). For example: first thing in the morning. Turn the hot water on medium flow. With your fingertips under the flowing water time how long it takes the water to get warm.

Seconds: \_\_\_\_\_

## **POST-HOT WATER DELIVERY EVALUATION**

**To be completed after installation of the Hot Water Lobster Instant Hot Water Valve.**

For a fair evaluation, again make sure the hot water has not been used for at least 4-hours at the faucet (in the location you installed the Hot Water Lobster Instant Hot Water Valve). Turn the hot water on medium flow. With your fingertips under the flowing water time how long it takes the water to get warm.

Seconds: \_\_\_\_\_

***Compare the time, water & energy saved!***

<b>TEMPERATURE ADJUSTMENT CHART</b>					
NUMERIC SETTING:	1	2	3	4	5
APPROX. TEMP. IN DEG. F:	77	95	113	131	140

For questions contact: [www.hotwaterlobster.com](http://www.hotwaterlobster.com)

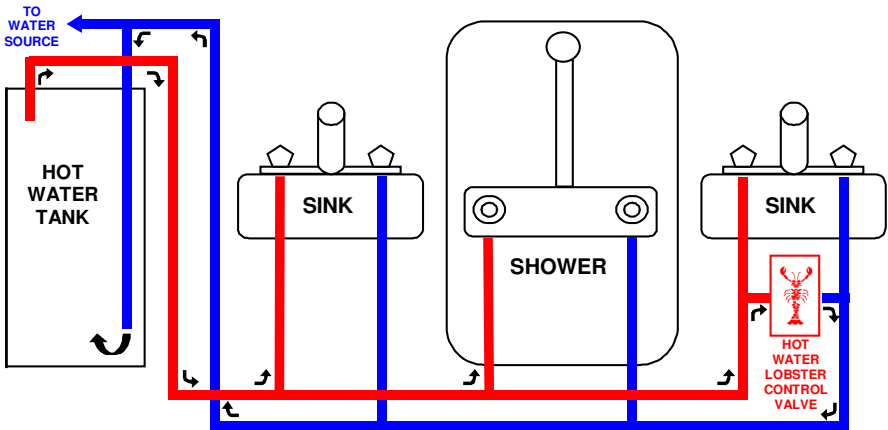
### Tools Required:

Screwdriver, Adjustable Wrench or a 5/8" Wrench & 7/8" Wrench



**NOTE:** Placing a towel under the water lines will absorb any water that may drain from the lines.

## Hot Water Lobster Instant Hot Water Valve TYPICAL INSTALLATION



- NO ELECTRICITY REQUIRED
- NO ADDITIONAL RETURN LINE REQUIRED

1. Pick a sink or shower to install the Hot Water Lobster.  
**NOTE:** For best results, pick the location furthest from the hot water tank. The hot water pipe between the hot water tank and the Hot Water Lobster will maintain hot water. All other sinks and showers, which feed from this hot water pipe, will also have faster hot water.



2. Shut off the hot and cold water supply valves to the faucet.

3. Disconnect and remove the hot and cold water feed lines from the faucet.



4. Disconnect and remove the hot and cold water feed lines from the water supply valves.

5. Connect and tighten the 3/8" brass compression fittings snugly to the water supply valves (hot to hot & cold to cold). Do not over tighten.



**NOTE:** The Hot Water Lobster has two 12" flexible cold water lines and two 12" flexible hot water lines preassembled. If necessary longer water lines or adaptors may be purchased at your local hardware or plumbing supply store.

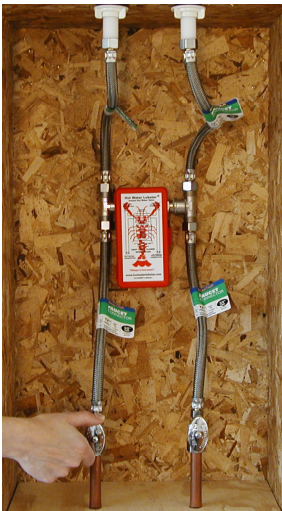


6. Connect and tighten the 1/2" brass pipe thread fittings snugly to the faucet (hot to hot & cold to cold). **NOTE:** Do not over tighten. The brass fittings have rubber seals (do not use pipe compound or Teflon tape).

7. If desired, you may fasten the Hot Water Lobster Mounting Box to the wall or cabinet using 2 self-tapping screws provided. The unit will function in any position.



**IMPORTANT:** Step 8 must be followed in the proper order to remove any air lock from the Control Valve.



8. **FIRST:** Turn on the hot water supply valve only, then turn on the cold water side of the faucet only. Wait until water flows from the faucet (turn off after about 6-seconds). **NOTE:** If the water in the pipe is hot, the water may have to cool down before water will flow through the faucet. **SECOND:** Turn on the cold water supply valve to the faucet. **THIRD:** Installation is complete and the faucet may be used as normal.

9. Check for leaks. Tighten connections as necessary to stop any leaks. **NOTE:** Do not over tighten.

## Trouble Shooting Tips

**Note:** Circulation of water by thermal convection must not be restricted (no check-valves) between the hot water tank and the Hot Water Lobster Instant Hot Water Valve.

### General Information:

The Hot Water Lobster Instant Hot Water Valve is intended to create an open loop within your hot water system (When the HWL valve is open, water will travel from the HWL valve through your cold water pipes to your hot water tank and hot water from your hot water tank will travel through your hot water pipes to the HWL valve). There must not be any flow restrictions in the open loop.

Our valve is designed to work with any hot water system that has a hot water tank in good condition (to enable thermal convection within the tank to circulate the water through the pipes). Check valves, manifolds, water softeners and filtration systems located between the HWL valve and your water heater may prevent water from freely flowing between the HWL valve and your hot water tank and may effect the proper operation of the Hot Water Lobster instant Hot Water Valve.

You should get hot water within 4-8 seconds at the faucet where the Hot Water Lobster Valve is installed. In between cycles, the water may only feel warm to the touch. The human body normally cannot accurately distinguish between temperatures above about 85 Degrees Fahrenheit. We recommend using a thermometer to accurately check your water temperatures.

It is rare, but occasionally we come across a plumbing system in which the valve does not work. Most often the cause is something in the existing water system, which prevents the free flow of water between the HWL valve and the hot water heater (air pocket, check valve, manifold, water softener or filtration system) or a defective or obsolete hot water tank. Modern hot water tanks draw hot water from the top and introduce cold water at the bottom of tanks (through an internal pipe). This is necessary to achieve thermal convection (pumping action), which circulates the water through the Hot Water Lobster Instant Hot Water Valve.

## **No instant hot water:**

You should get hot water within 4-8 seconds at the faucet where the Hot Water Lobster Valve is installed. There are so many variables from plumbing system to plumbing system standard diagnostics is difficult. For testing purposes, increase the HWL temperature control knob to the highest setting (5). Once you are satisfied that the water is properly circulating, you can adjust the temperature to a more comfortable setting. The enclosure door should be closed during operation to insulate the water from ambient air.

Repeat “Step 8” of the installation. If water flows out of the cold-water side of your faucet-the valve is opening properly.

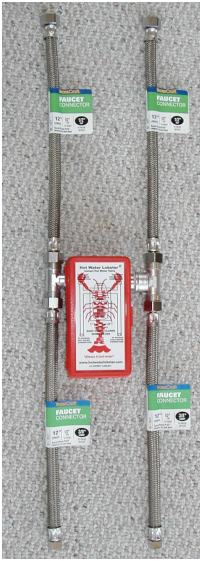
Air Lock Removal (You may have an “air lock” (air pocket) elsewhere in your plumbing system): Fully open all your faucets (both hot and cold) on the inside of your home, flush all toilets and let the water run simultaneously for at least 2-minutes. Then shut off all faucets and you may now use your water as normal. In most cases this should remove any “air locks” (air pockets) in the rest of your plumbing system. Your Hot Water Lobster Instant Hot Water Valve should now function properly.

If you still do not have instant hot water, something in your plumbing system is preventing the free circulation of water between the Hot Water Lobster and your water heater. If you do not visibly have an inline check valve, manifold, water softener or filtration system, it is likely that you have a check valve under the hot and cold water unions on your hot water tank. Contact us or the hot water tank manufacturer for instructions on removing the check valves (often called “heat traps”).

## **Cold water is warm:**

The warm water returns to your hot water tank through the cold water pipes. During cycles, the water in the cold water pipes (between the Hot Water Lobster Instant Hot Water Valve and the hot water tank) may be warmer. As the warm water sits in the pipes it will drop to ambient temperature. Most of the time this warmer water is beneficial (washing dishes, laundry, hands and etc). If cooler water is desired, simply run your cold water until ground temperature water reaches your faucets (as you would normally do to get ground temperature water).

Adjusting the Hot Water Lobster Instant Hot Water Valve temperature control to a cooler setting will reduce warm water in your cold water pipes. However, reducing the temperature setting too much also reduces the effective recirculation cycle.



## **INCLUDES EVERYTHING YOU NEED FOR AN EASY INSTALLATION:**

- BRASS VALVE
- BRASS FITTINGS
- TECHNICAL SUPPORT  
(Phone: 586-337-7848)
- FLEXIBLE WATER LINES
- MOUNTING HARDWARE
- ADJUSTABLE TEMPERATURE
- PREASSEMBLED AND TESTED

(⇔ AS SHOWN)

## **Warranty**

### **30-DAY UNCONDITIONAL MONEY BACK GUARANTEE**

No Return Authorization required. Return to the place of purchase within 30-days of the purchase date in the original condition and the original packaging for a refund of your purchased price (excludes shipping and handling). Please allow 2 weeks for processing returns.

Include: A copy of your receipt, or Your Name, Address, City, State Zip Code, Phone No., Order No., and Credit Card Information (Type, Number, and Expiration date). Note: We do not accept shipments from United Parcel Service.

### **10-YEAR PARTS AND LABOR WARRANTY**

No return authorization required. Ship the merchandise to us and we will recondition or replace any defective or worn components. Please allow 4 weeks for reconditioning.

Send repairs to: HOT WATER LOBSTER/RECONDITIONING, 55549 Danube, Macomb, MI 48042, Include: Your Name, Address, City, State Zip Code, Phone No., Date Purchased and return Shipping & Handling of \$18.00 (US shipments), \$28.00 (Canadian shipments) or \$78.00 (all other locations).